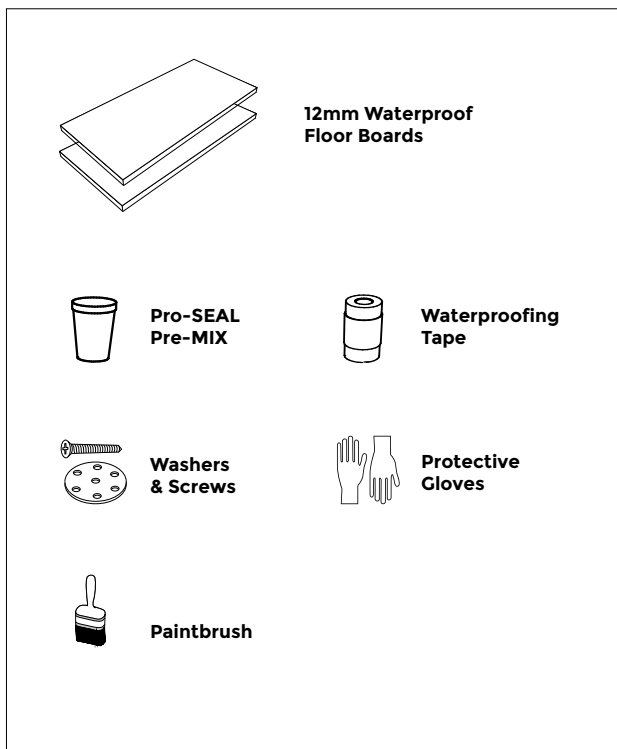


Professional Wall Kit - 12mm Tile Backer Board

51000032380
51000323405

Typical Parts Supplied (quantity varies)



Important Information

PLEASE READ THESE INSTRUCTIONS THOROUGHLY BEFORE STARTING INSTALLATION.

Please note that Wallboards can either be used in place of plasterboard or can be fixed on top of existing plasterboard or solid wall. If you fix the panels on top of existing you will need to consider the edge detail as the Wallboards will be approximately 12mm deep when fitted.

Check the pack and make sure that you have all the parts listed.

When you are ready to start make sure that you have the right tools to hand and that the installation area is clean and dry.

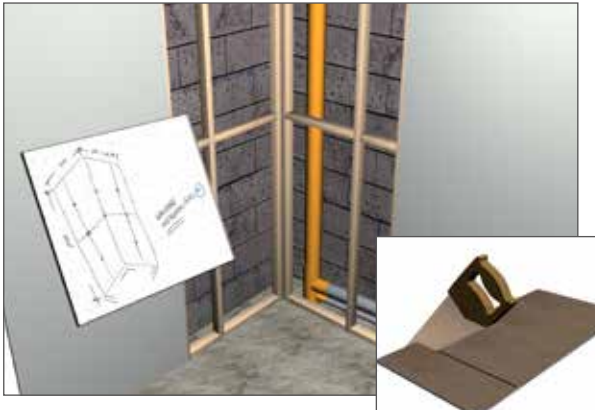
When drilling or fixing into walls or floors it is essential that you check for pipes and wires before commencing.

Site Preparation

It is essential that all wallboard joints are along timber stud work. If you do not have suitably positioned stud work you should add extra timbers before starting installation.

Tools required (not supplied)

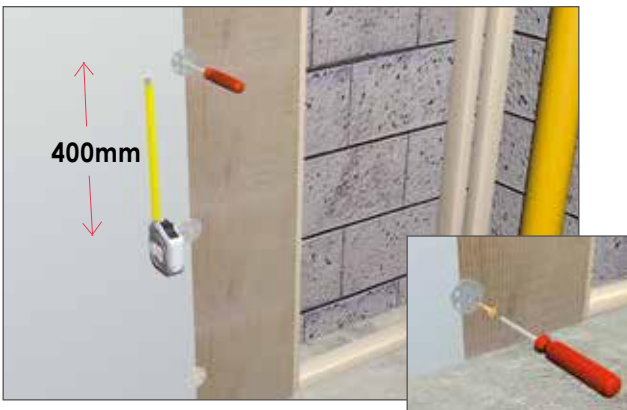
- **Tape Measure**
- **Pencil**
- **Paper**
- **Hard Point Saw**
- **Screw Driver PZ2**
- **Safety Goggles**
- **Breathing Mask**
- **Eye Protection**
- **Scissors**
- **Bucket**



Step 1

Measure the wall area and plan the wallboard layout on a sheet of paper. The wallboards are 1210mm x 900mm and can easily be cut with a hand saw if required.

Note: Ensure stud centres are no more than 600mm apart.



Step 2

Before proceeding, check thoroughly for pipes and wires in the wall. Working from the edge of the existing plasterboard, place the first wallboard into position. Place the countersunk hole of a fixing washer over the vertical joint between plasterboard and wallboard.

The first washer should be just above the level that the shower tray or bath will finish. Using a fixing screw, tighten firmly into place. Place another fixing approximately 400mm above the first and then a further fixing approximately 400mm above that.

Step 3

Place the second wallboard into position and fix as described in Step 2. Repeat this step for the remaining boards.



Step 4

The remaining fixings and screws should be equally spaced along the horizontal edges.

Step 5

Fit the shower tray or bath in accordance with the manufacturers' instructions.



Step 6

All wallboard to wallboard joints need to be waterproofed.

(Please note: wallboard to plasterboard joints do not need to be waterproofed because plasterboard itself is not waterproof). Measure the horizontal and vertical joints and cut the standard tape to the correct lengths. The tape can overlap so it must be cut to the full height and full width of the area. Normally 3 pieces approx 2500mm are required for the vertical lengths and 1 piece approx 1800mm for the horizontal joint but this could vary depending on the installation.



Step 7a

(Only if you have a shower tray) Before proceeding you must put on the gloves that are supplied and we also recommend that you wear eye and breathing protection.

Paint the tape sealer along all the to joints approximately 60mm wide on either side of the joint line. Place the corner into position and press back into the tape sealer. Paint the edges of the corner where the tape will overlap.



Step 7b

(Only if you have a bath or non shower tray) Before proceeding you must put on the gloves that are supplied and we also recommend that you wear eye and breathing protection. Make sure that the bath or shower tray is completely clean and free from grease or dust. Remove the backing from the adhesive corner and place the corner into position. Press the glued edge firmly to create a good seal.

Cut the adhesive tape into 2 pieces that will overlap the corner by approx 25mm. Remove the backing from the adhesive tape and place into position along the edge of the bath or shower tray. Press the glued edge firmly to create a good seal. Paint the tape sealer onto the wall behind the adhesive corner and press the corner into the tape sealer. Paint the edges of the adhesive corner where the tape will overlap. Paint the wall behind the adhesive tape. Press the adhesive tape into the tape sealer. Paint the tape sealer along all the wallboard to wallboard joints approximately 60mm wide on either side of the joint line.





Step 8

Place the tape over all the remaining to joints and press firmly into the tape sealer.

Leave to dry for approximately 3 to 5 hours after which the wall is ready for tiling.